

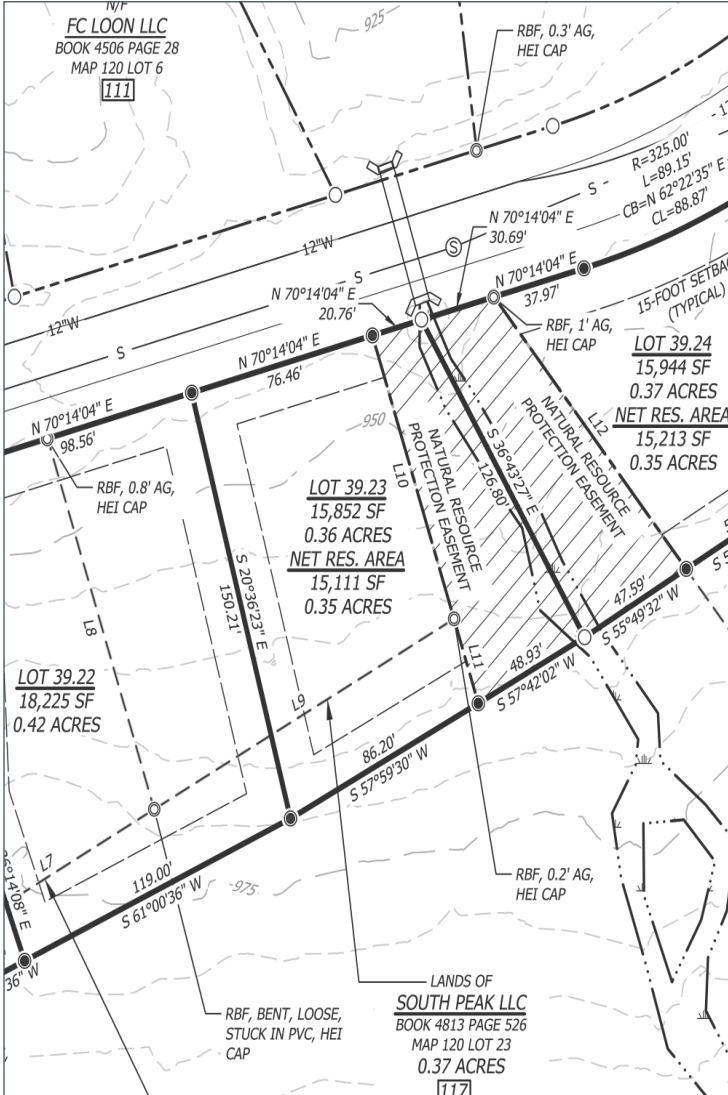
LOT # **118/39.23**
 Crooked Mountain Road
 Lincoln, NH, 03251

LOT SIZE .35 ACRES / 15,111 SF

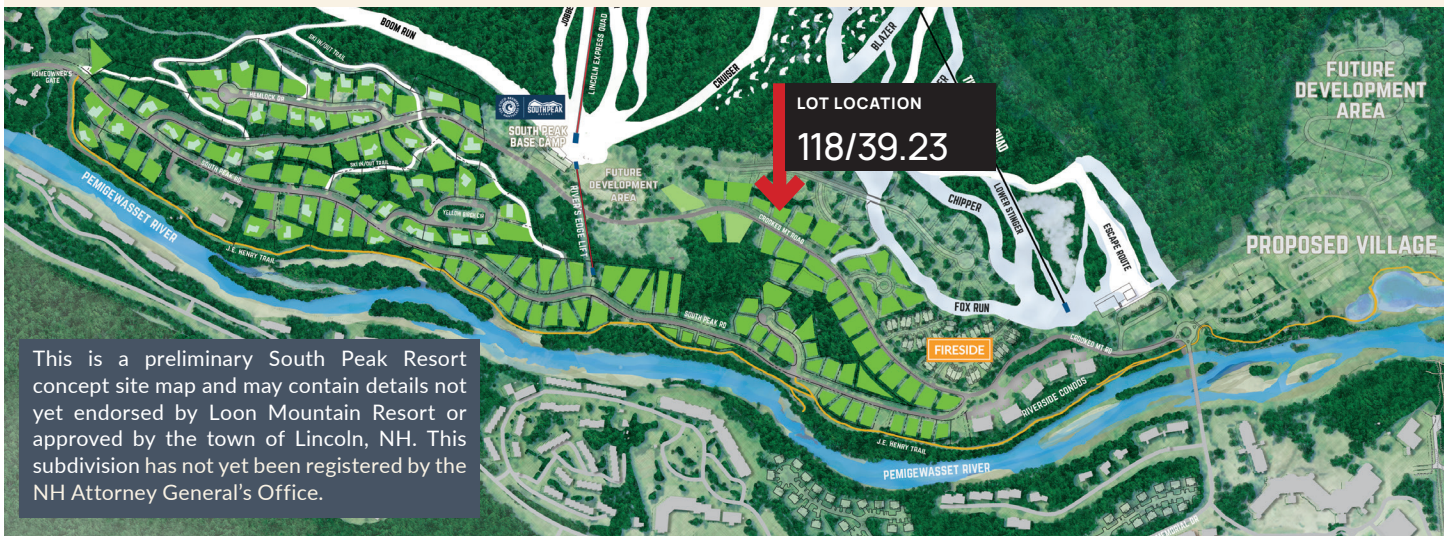
DESCRIPTION

At the center of everything South Peak, this Crooked Mountain Road lot is steps from the ski-in trail connecting to Loon's new South Peak expansion! This lot can comfortably fit a 2,000-3,000 sqft. home with a 2 car garage. Connect with the natural beauty of South Peak and enjoy all four seasons on the banks of the Pemi River with a 10-minute walk to the J.E. Henry Walking Trail. For those wanting more action, this lot is a 5-minute walk to the fun at South Peak Basecamp and a 8-minute walk to dinner and shopping in the planned Village.

603-745-7279
 info@southpeakresort.com

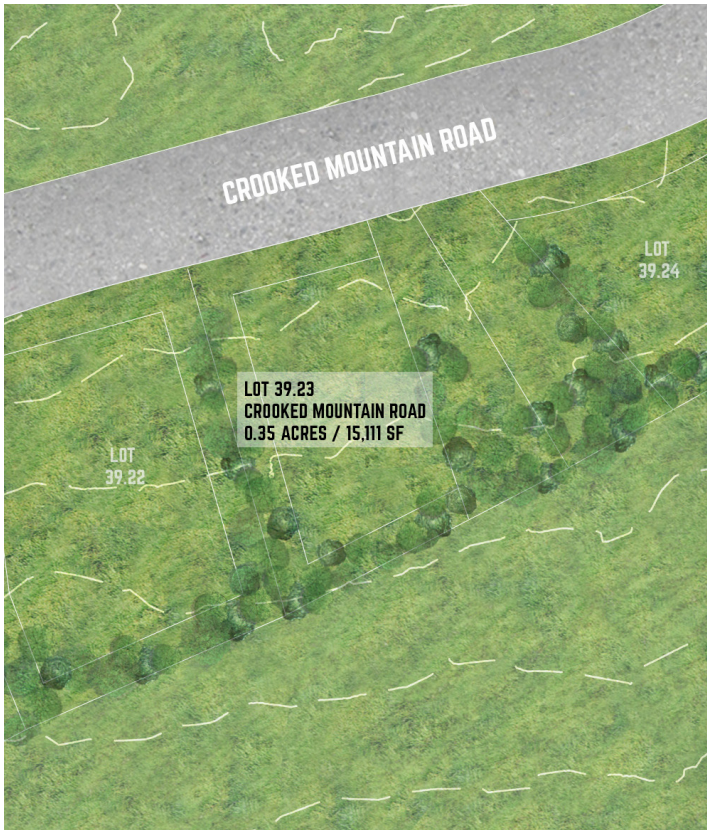


For current lot availability, see our interactive map at southpeakresort.com, or call 603 745-7279

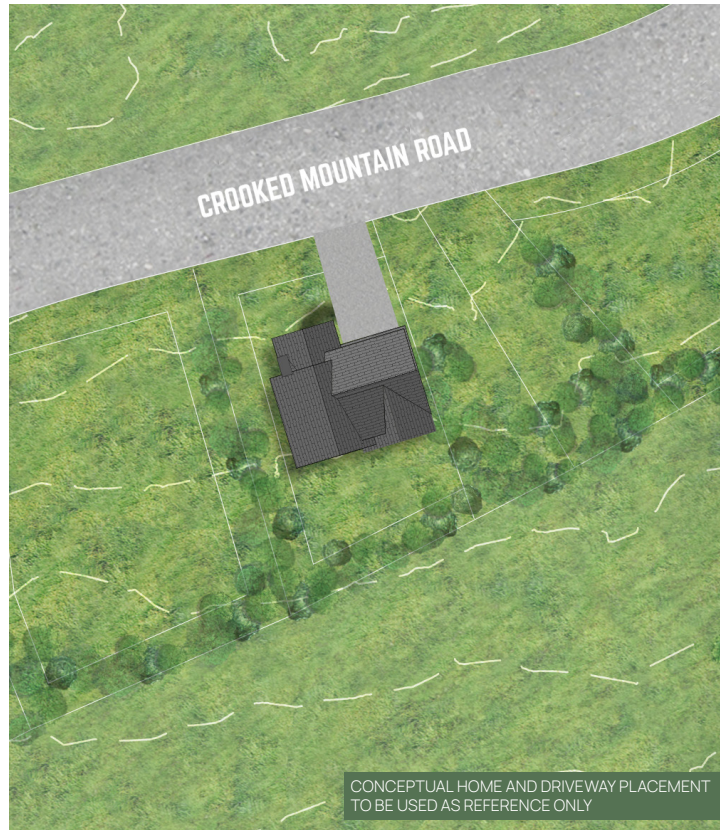


This is a preliminary South Peak Resort concept site map and may contain details not yet endorsed by Loon Mountain Resort or approved by the town of Lincoln, NH. This subdivision has not yet been registered by the NH Attorney General's Office.

Conceptual Rendering of Lot Cleared



Conceptual Home & Driveway Placement



Your Ultimate 4-Season Mountain Resort



SALES OFFICE

South Peak Experience Center
25 South Mountain Drive, Unit A9
Lincoln, NH, 03251

MAILING ADDRESS

P.O. Box 938, Lincoln NH 03251-4268

603 745-7279

info@southpeakresort.com

southpeakresort.com



Scan with
mobile phone
for website

DISCLOSURE

All information, images, and maps on this brochure are presented as general information by South Peak Resort. No guarantee is made that the amenities, facilities, and features depicted here in artist renderings, descriptions, maps, or otherwise will be built or that, if built, the number of types, sizes, and locations will be as displayed or described. Actual design and construction may vary in fit and finish from what is displayed here. Potential buyers must independently verify all details and specifications, including but not limited to the area, amenities, specifications, services, terms of sales, payments, and all other relevant terms with our sales team before deciding to buy. South Peak Resort reserves the right to make changes at any time, without notice, in designs, product plans, prices, colors, brands, materials, equipment, specifications, models, and availability. Access and use of certain areas may be restricted and subject to the payment of additional fees and additional restrictions. All improvements and amenities are planned and they have not yet been completed. Loon Mountain Resort is a recreation area operator that is owned and operated separately from South Peak Resort. Ski trails, lifts and other skier services depicted are conceptual. LOON, LOON & Bird Design, and Bird Design are trademarks of Loon Mountain Recreation Corporation. — Void where prohibited by law—revised Decemberr 2023.